

# درس هشتم

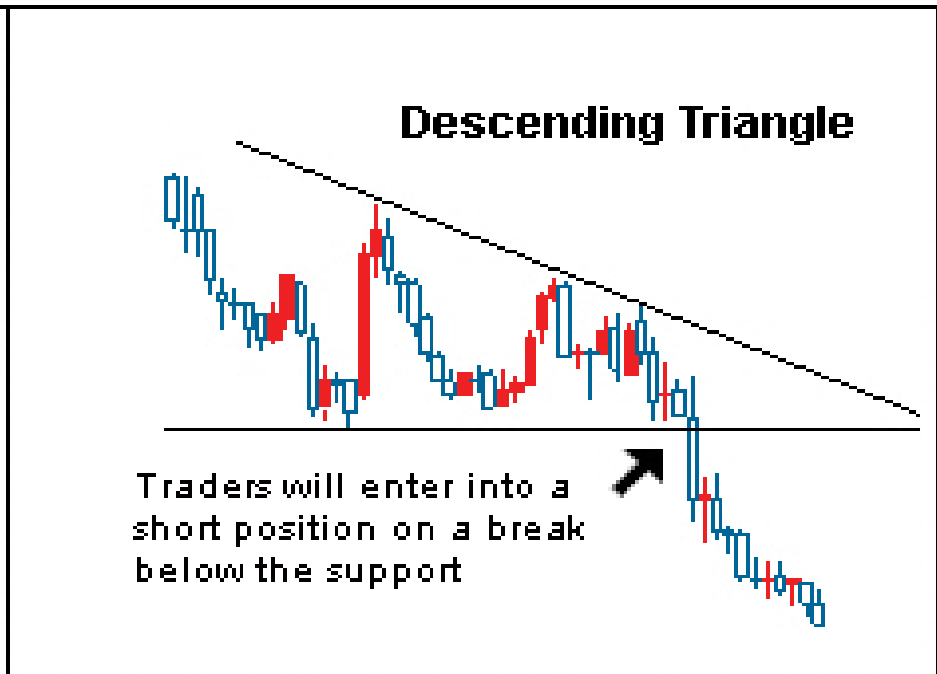
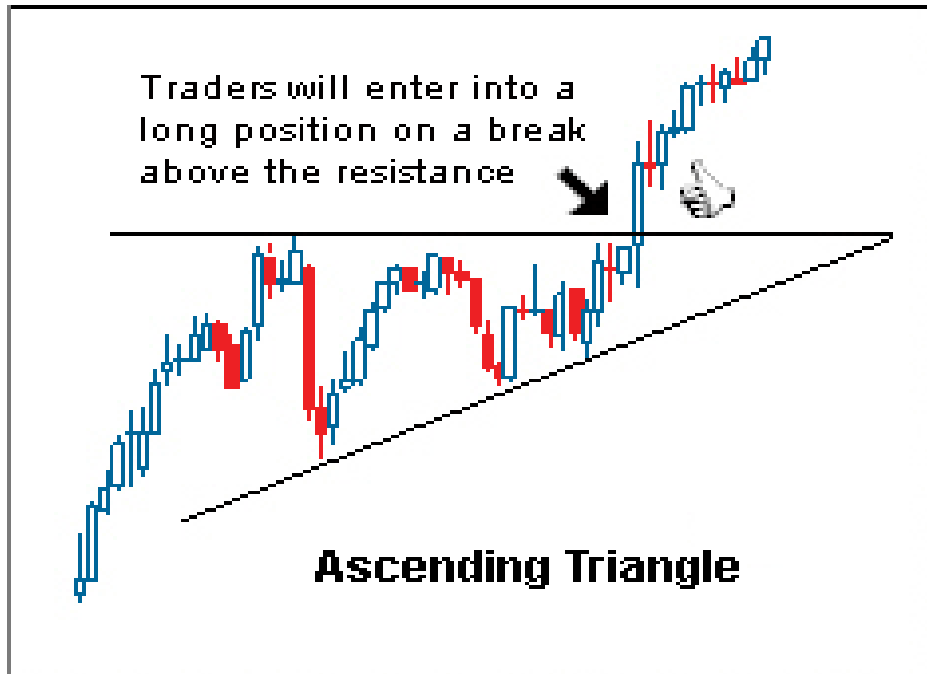
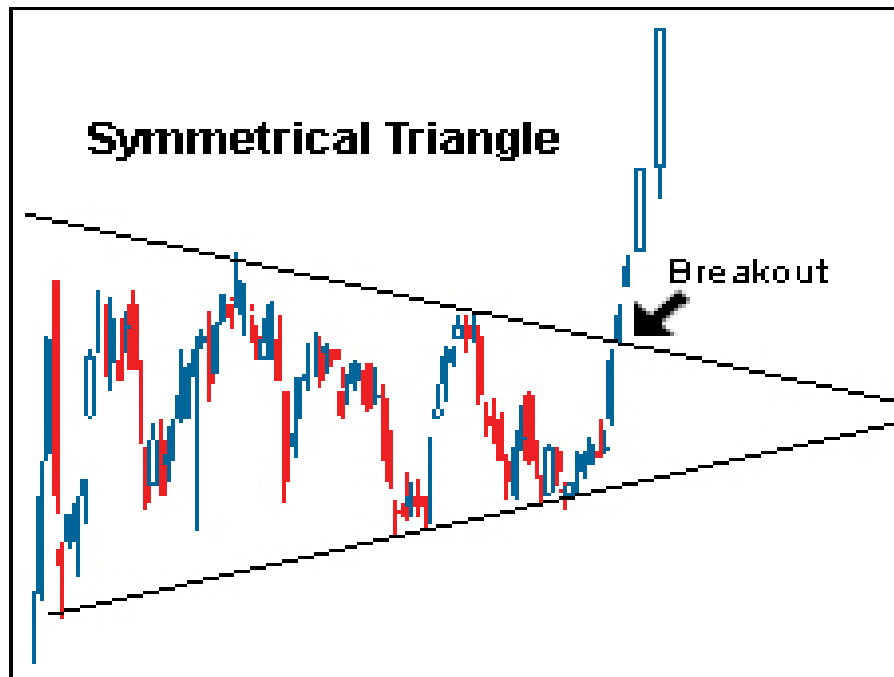
الگوهای ادامه دهنده

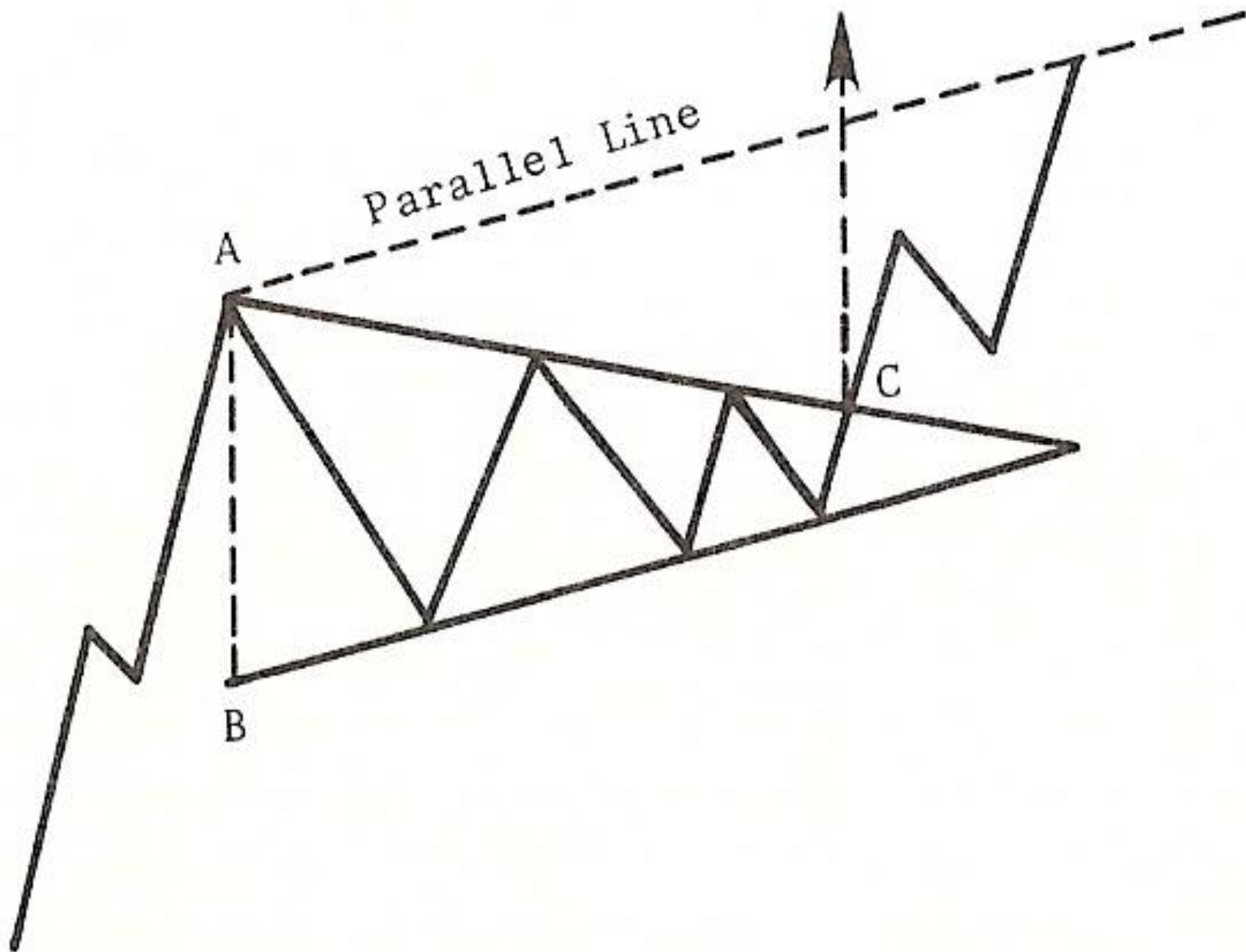
# 1. مثلث ها

الف) مثلث متقارن

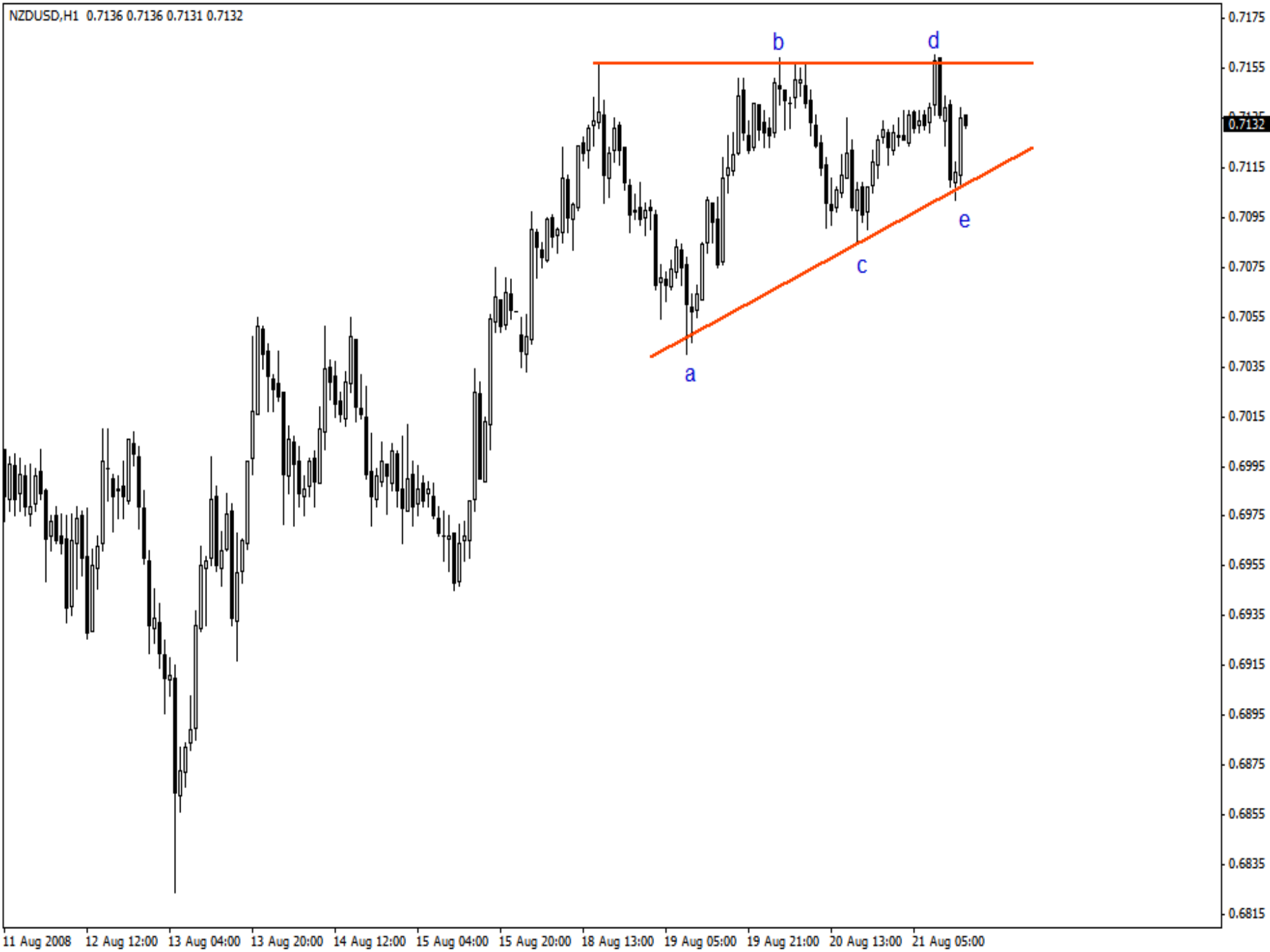
ب) مثلث افزایشی

ج) مثلث کاهش‌ی







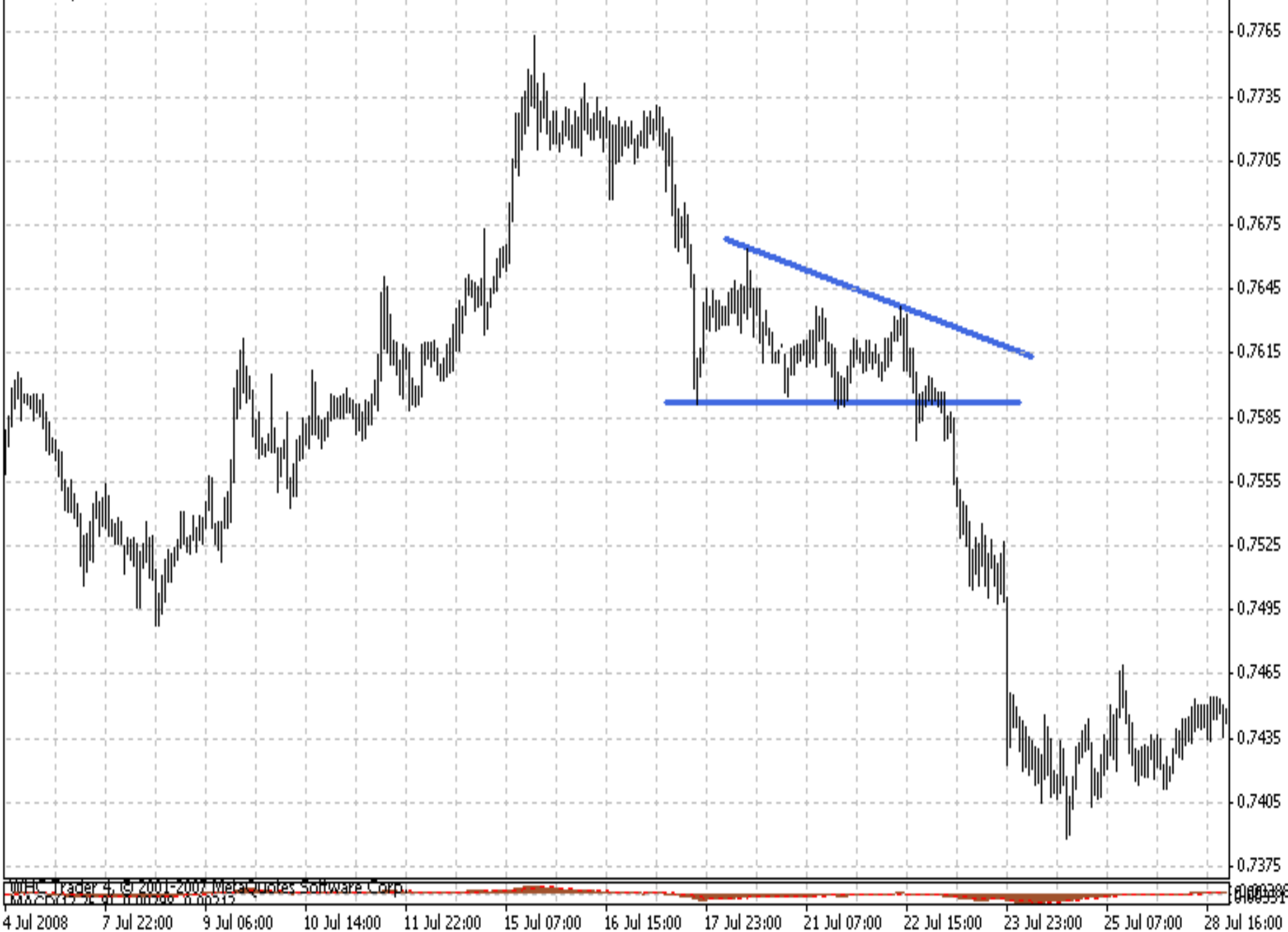




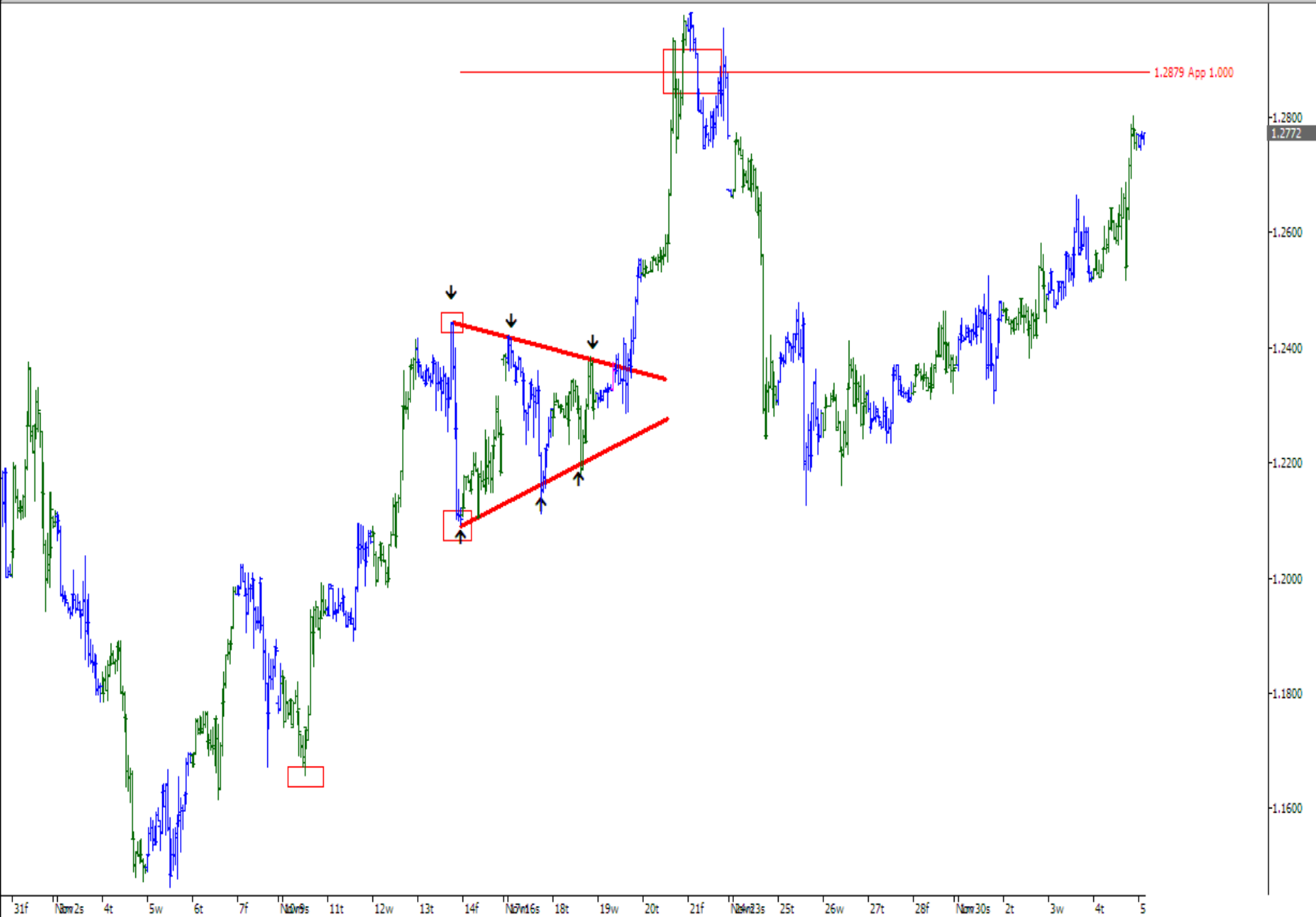




NZDUSD,H1 0.6978 0.6987 0.6975 0.6977

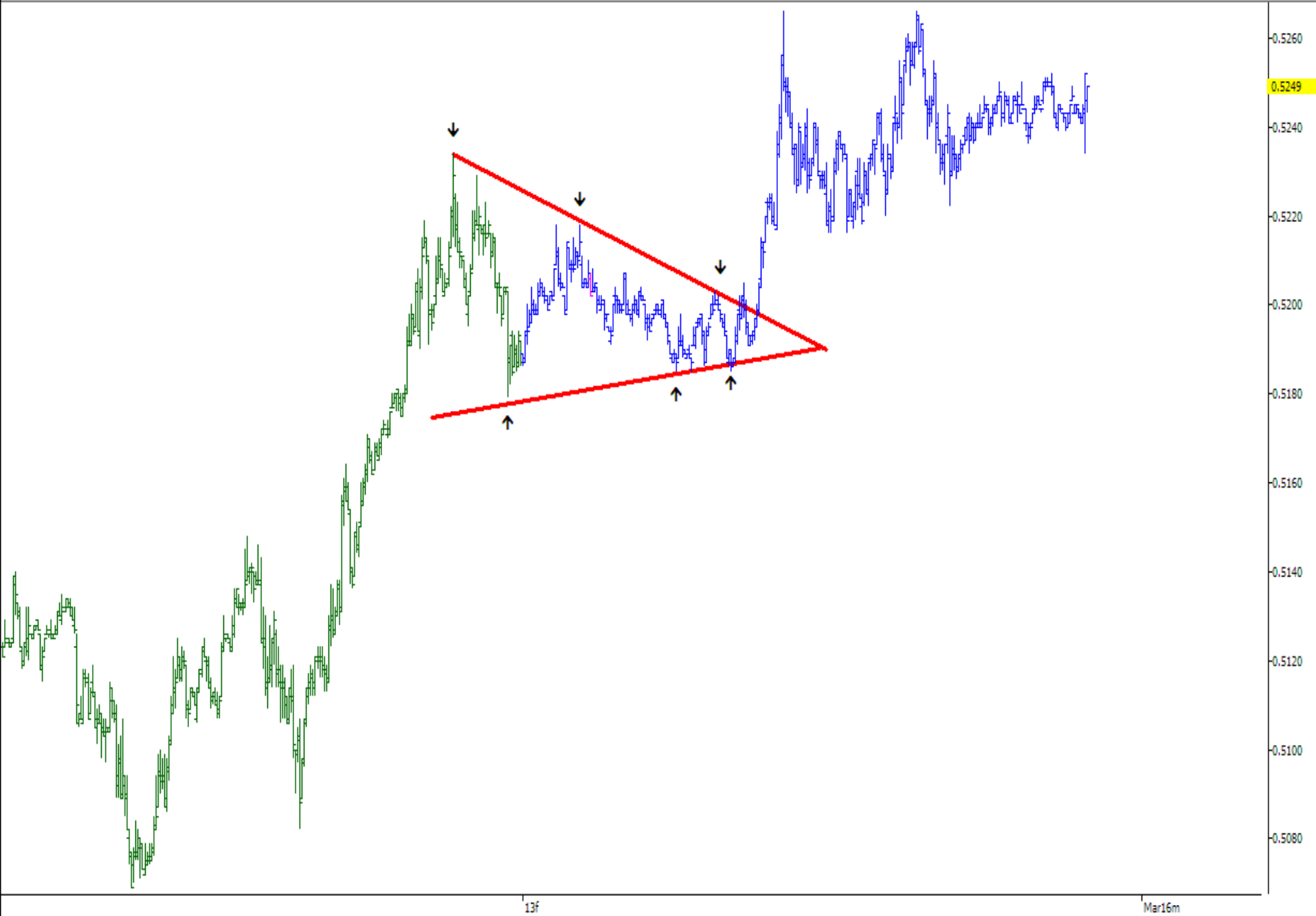






• F R 17-Mar-09 Tue 11:30 919.4000 921.5000 918.9000 921.4000 -2.1000 +

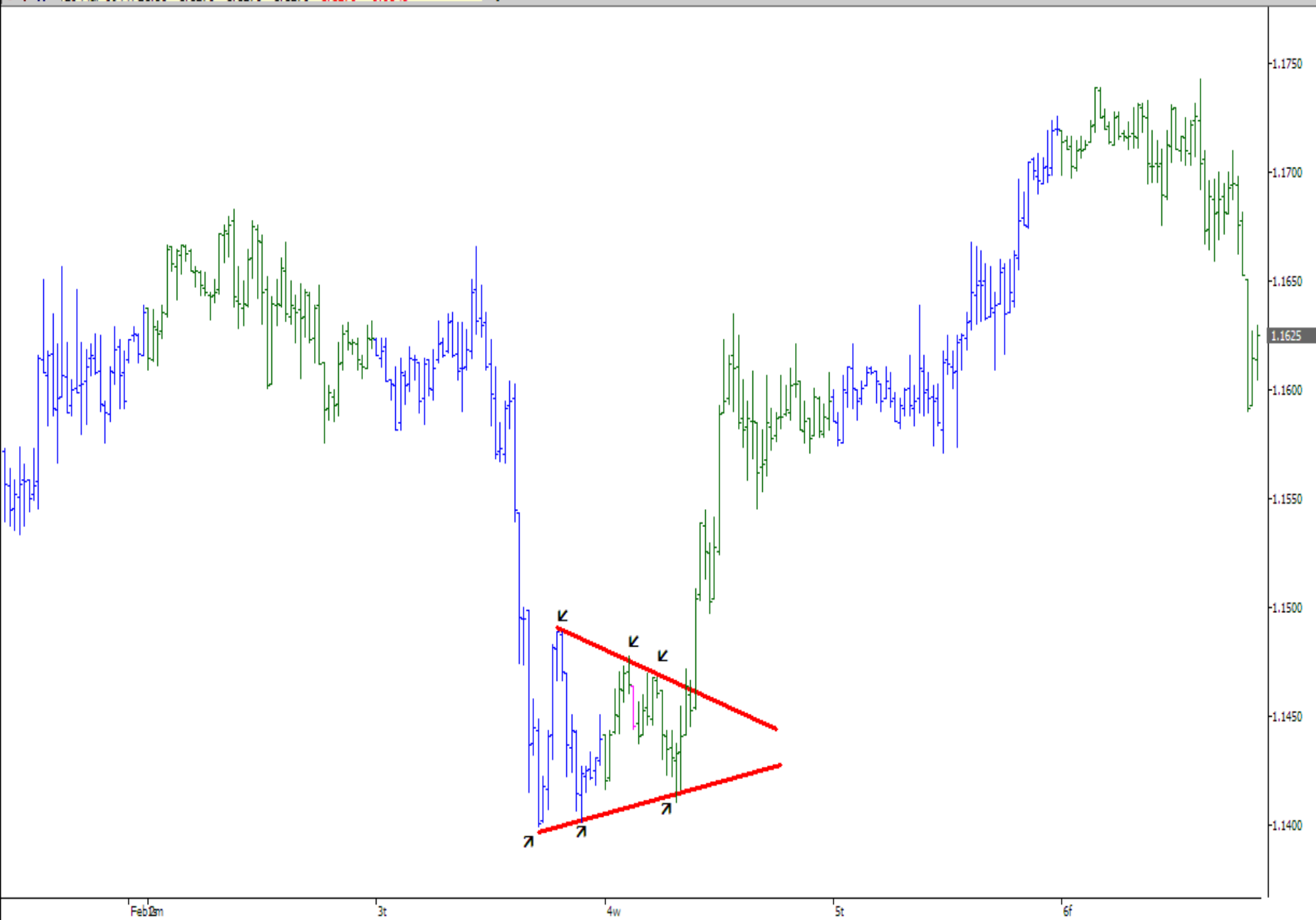




13f

Mar16m

• F R 20-Mar-09 Fri 21:30 1.1270 1.1270 1.1270 1.1270 -0.0548 +

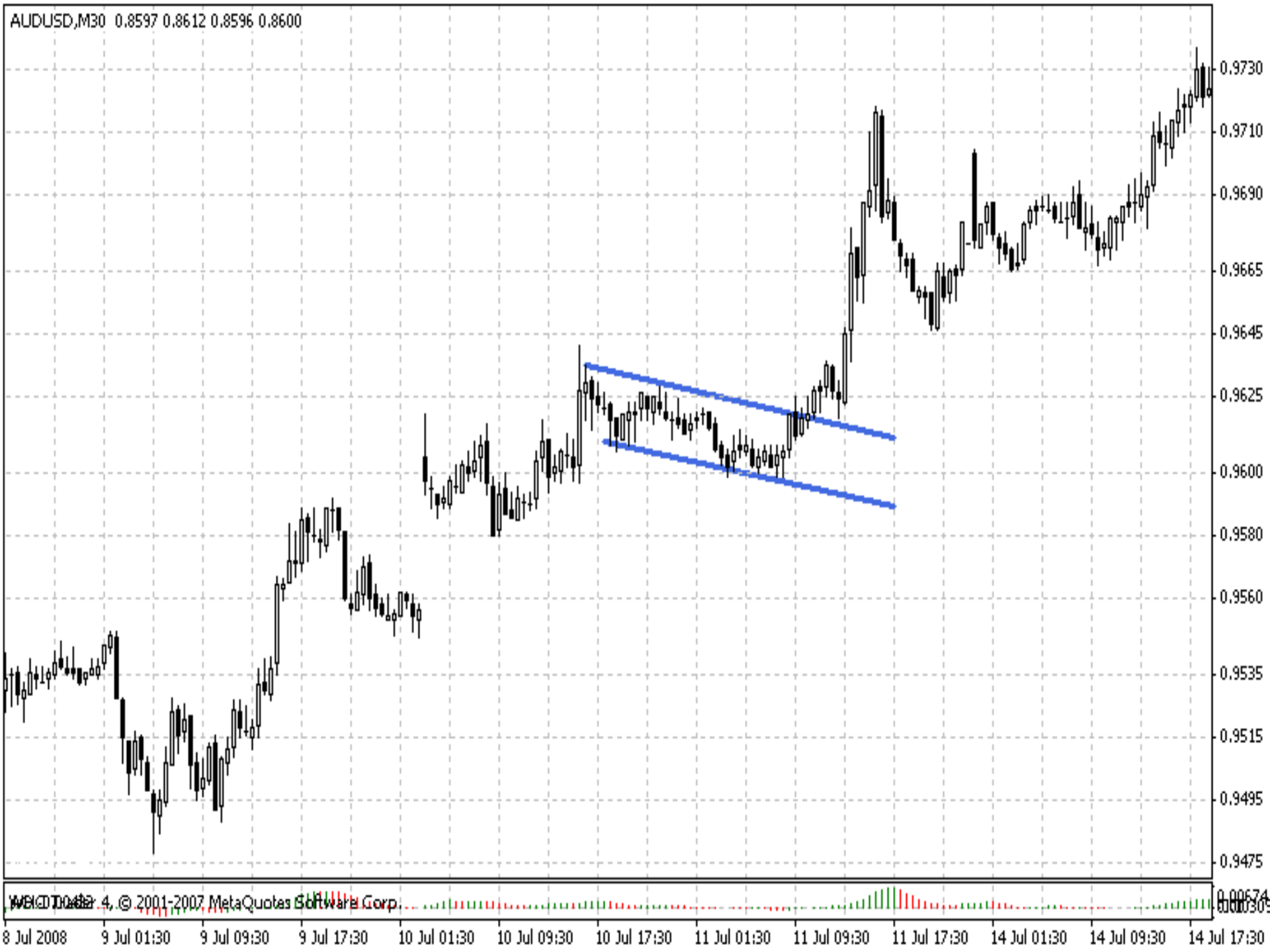




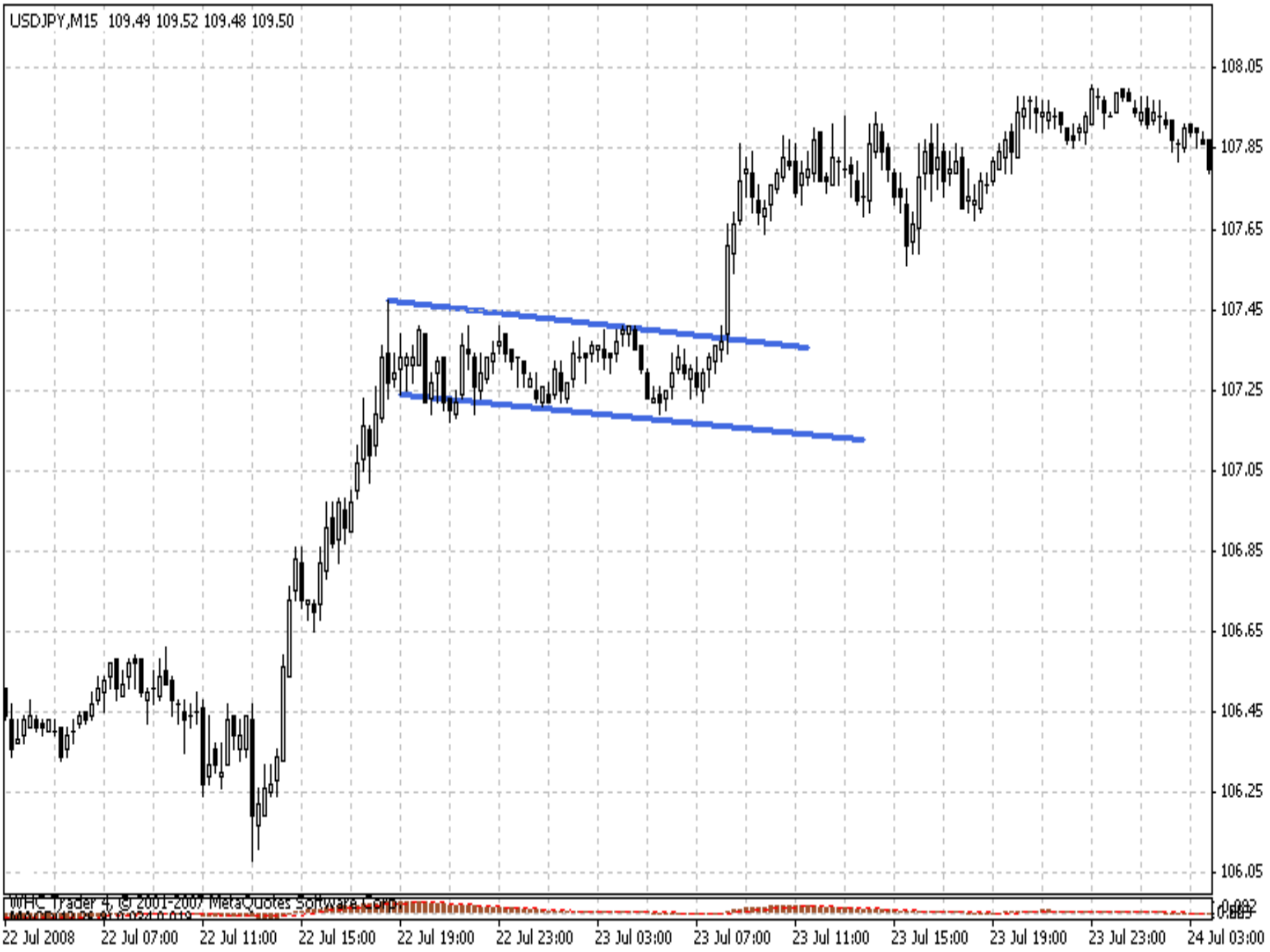
(ب) پرچم ها

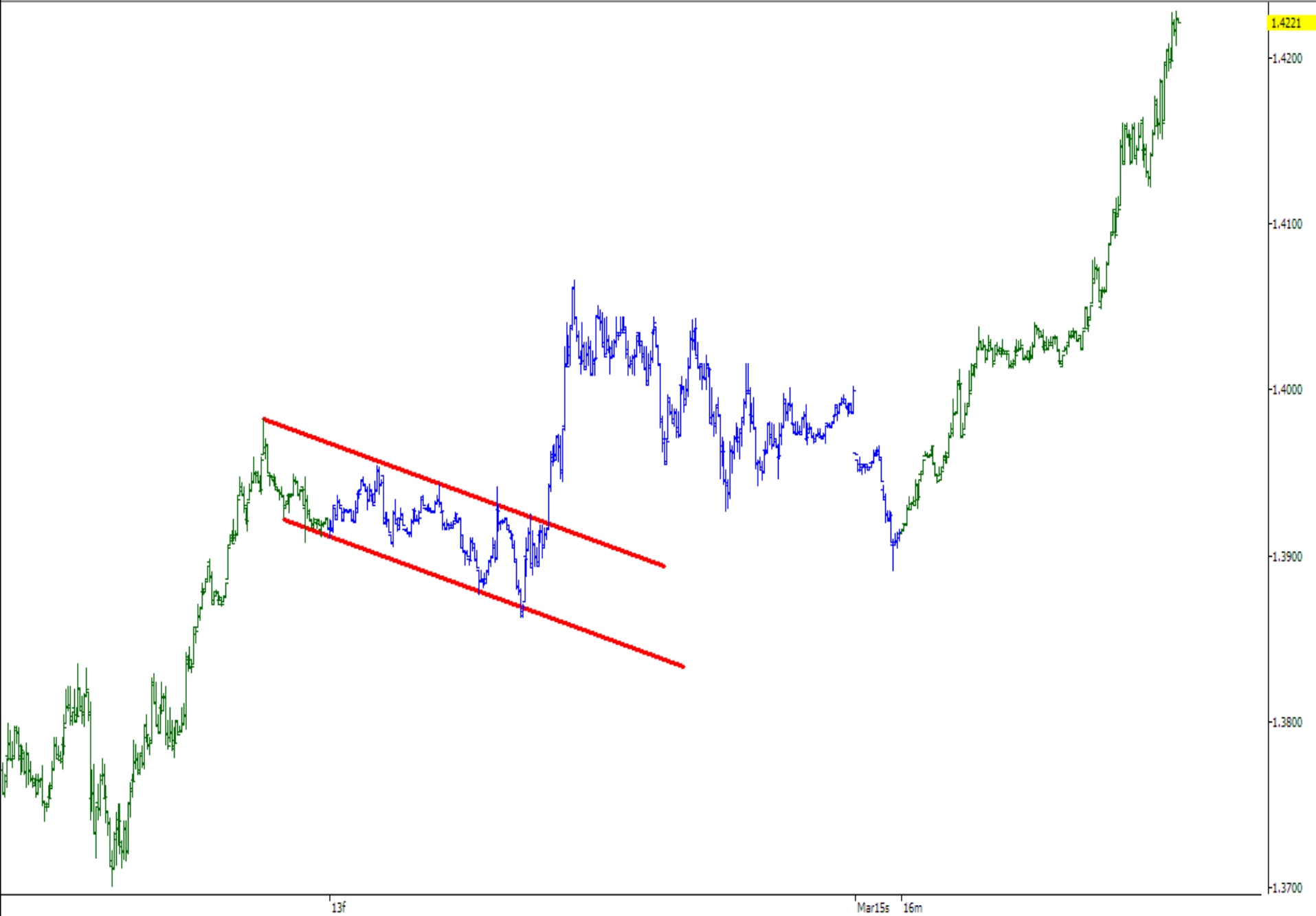


AUDUSD,M30 0.8597 0.8612 0.8596 0.8600

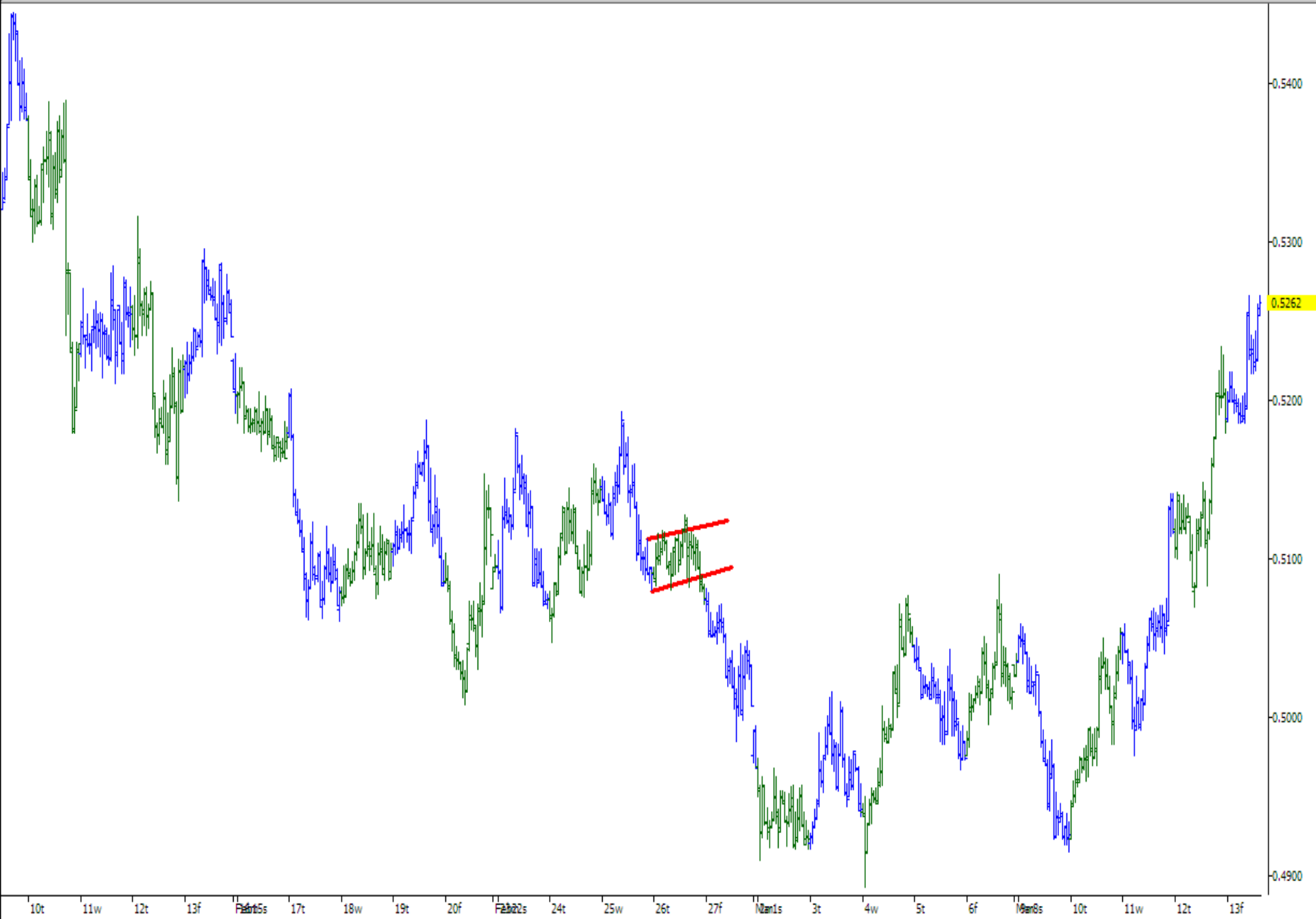


USDJPY,M15 109.49 109.52 109.48 109.50

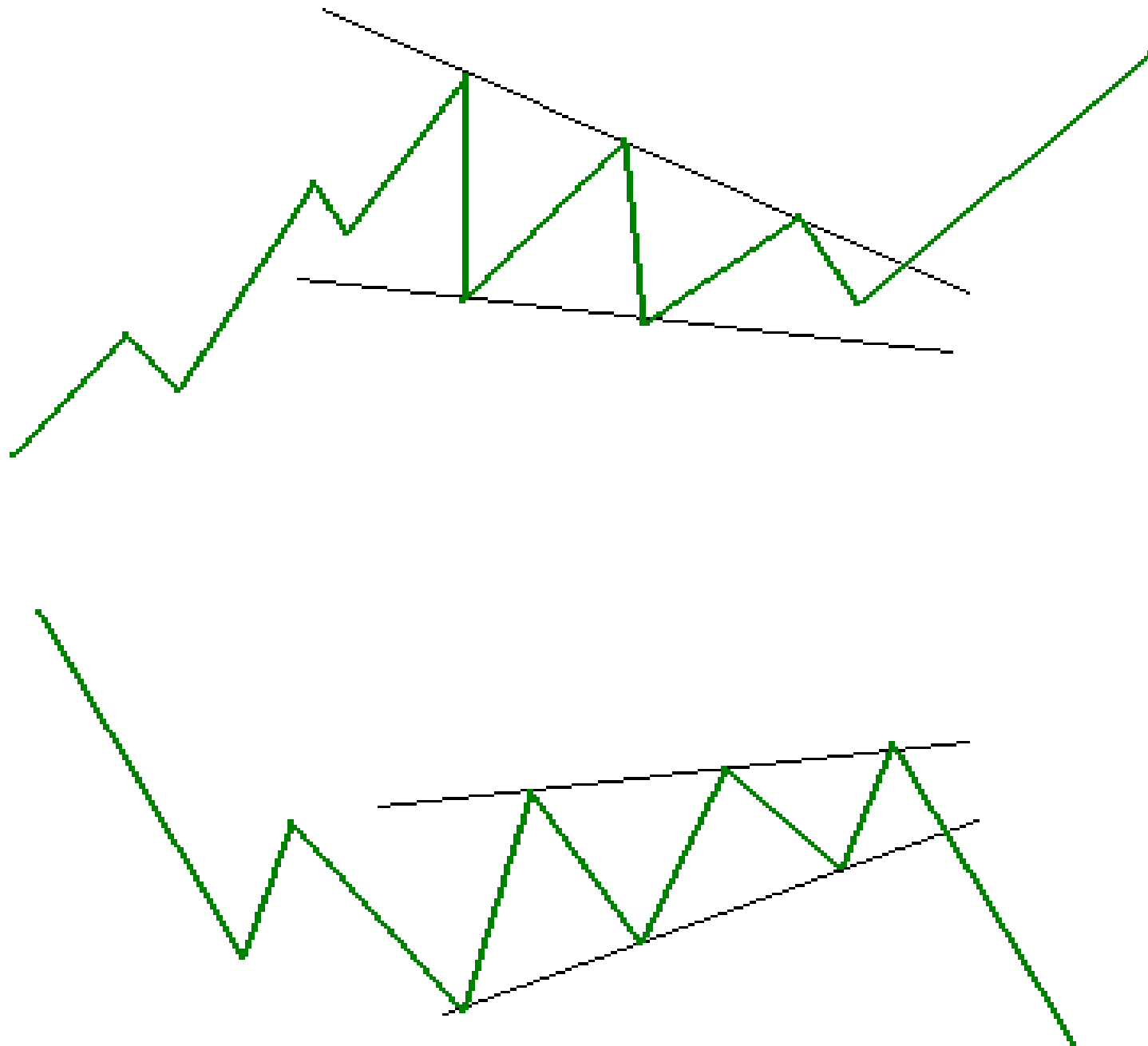




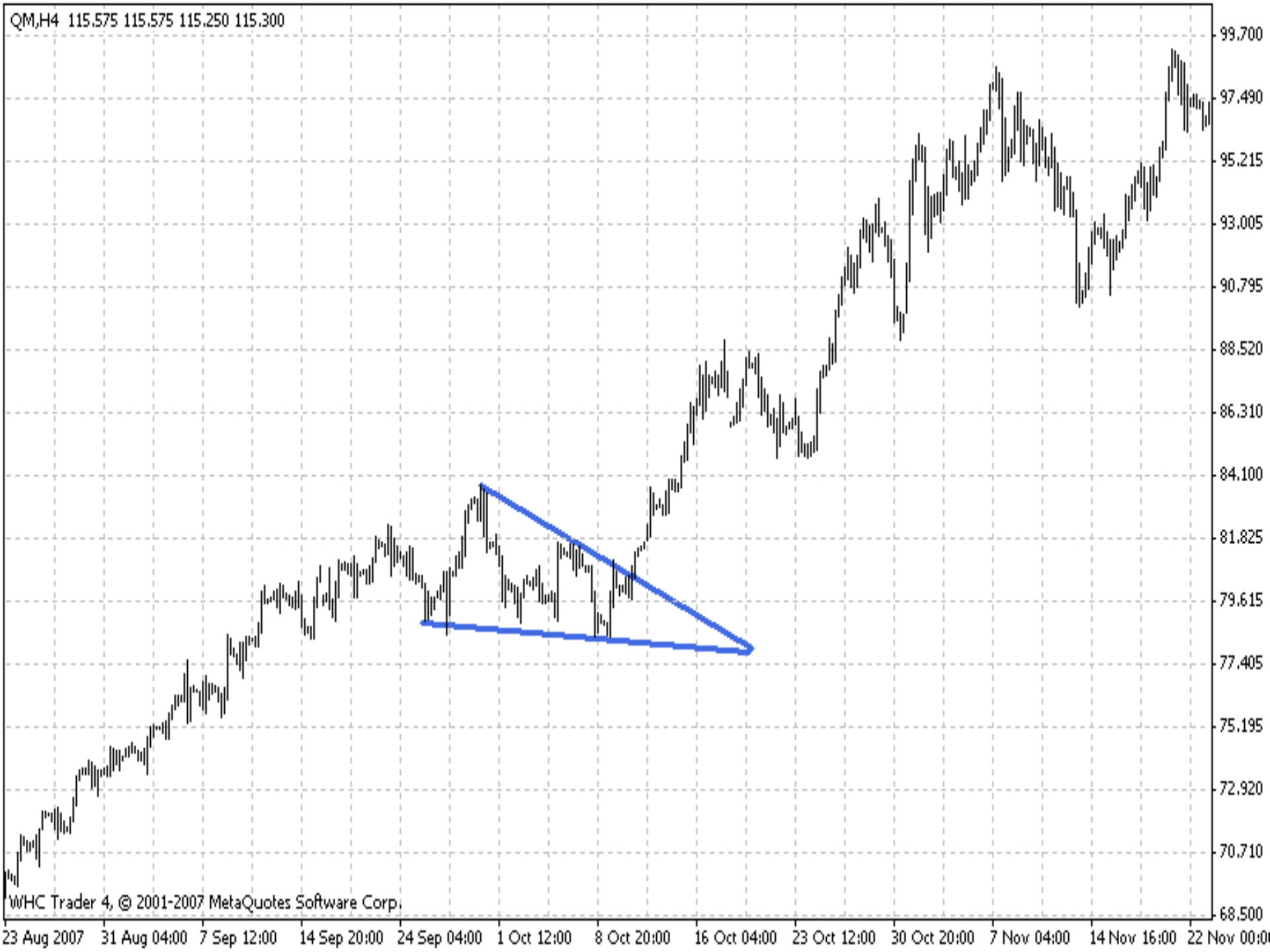
• F R 13-Mar-09 Fri 15:00 0.5254 0.5266 0.5253 0.5262 0.0075 +



ج)گروه ها











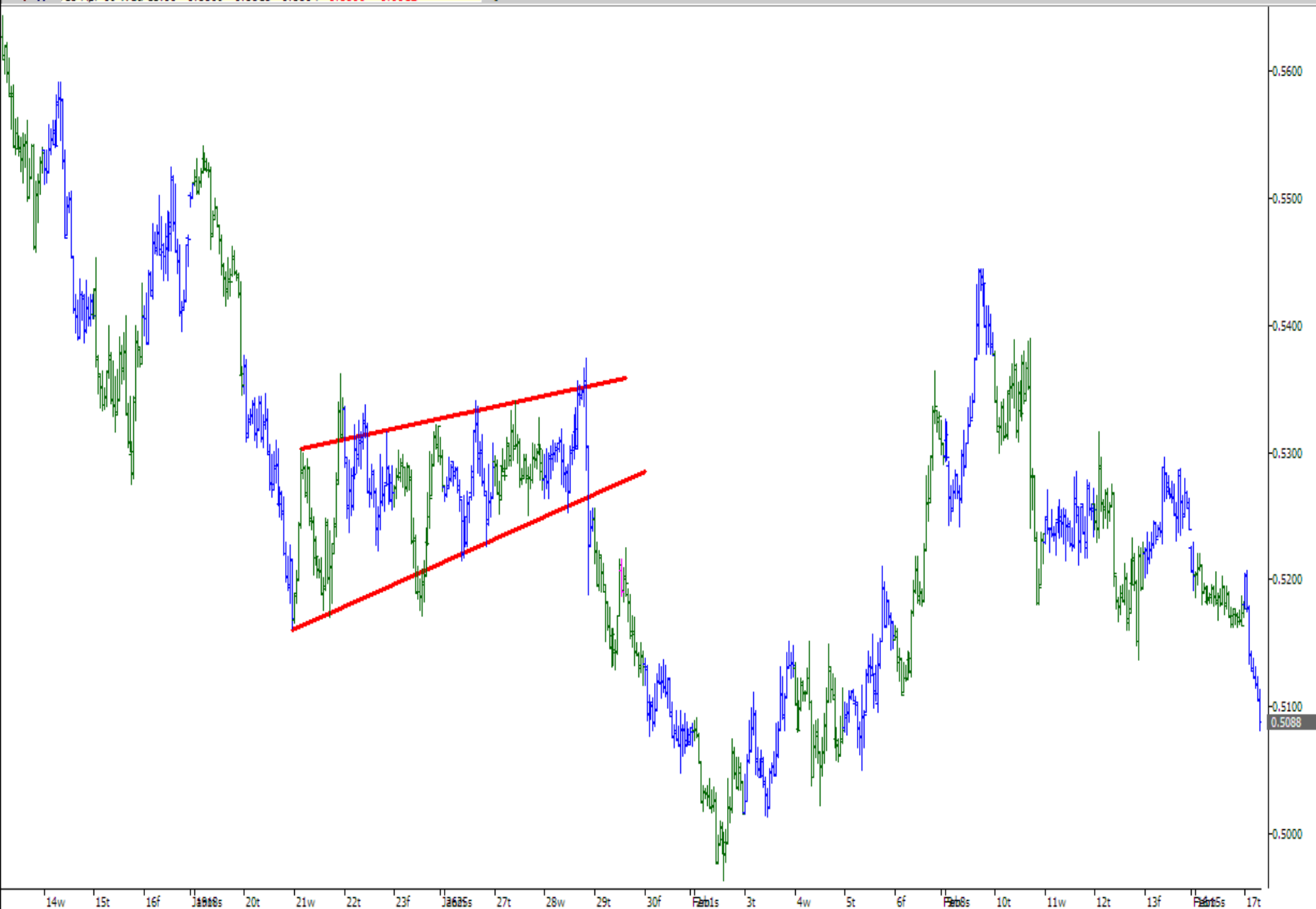
## DT\_NZDUSD\_H1-I

● F R 15-Apr-09 Wed 13:00 0.5809 0.5818 0.5804 0.5806 -0.0012 +

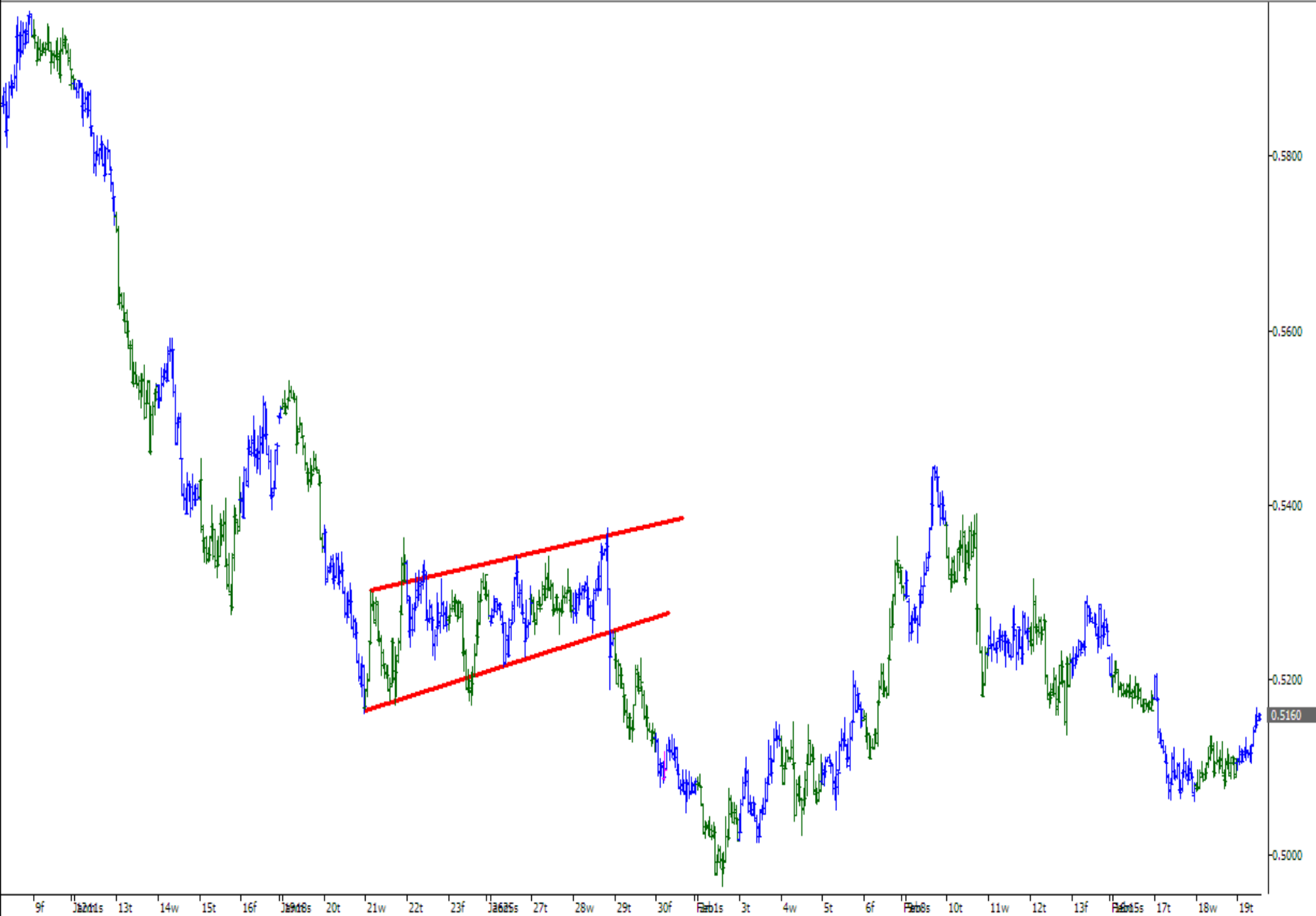


## DT\_NZDUSD\_H1-I

• F R 15-Apr-09 Wed 13:00 0.5809 0.5818 0.5804 0.5806 -0.0012 +



• F R 13-Mar-09 Fri 15:00 0.5254 0.5266 0.5253 0.5262 0.0075 +



• F R 16-Mar-09 Mon 9:30 0.5282 0.5282 0.5282 0.5282 0.0074 +



کارپایگاه درآمدها و هزینه‌ها